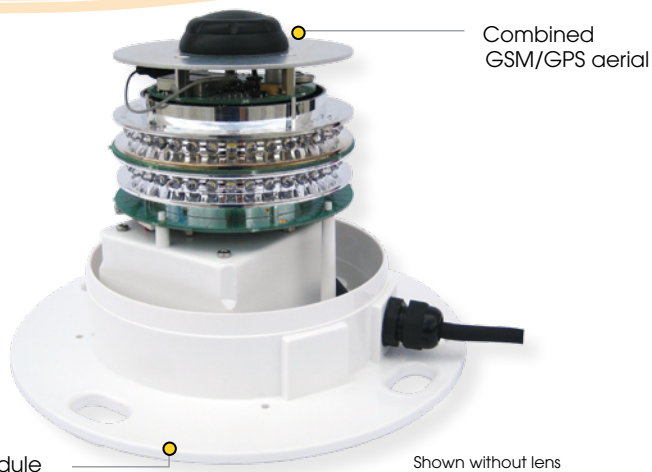


# GSM Cell-Phone Monitoring & Alarm System



Motorola trusted partner



## The Sealite Advantage

- Monitor lantern status using any cell-phone or Sealite's secure website user-portal login
- Reports pre-programmed alarm conditions to designated cell-phone numbers
- Real time information
- GSM network- universal standard for mobile communication
- GSM system uses encryption to make messages more secure
- Low cost interrogation - cost of standard SMS
- Internally integrated system available with a range of Sealite lanterns to maintain IP68 waterproof rating



Sealite's cost effective GSM Cell-Phone Monitoring and Alarm System provides users with the ability to efficiently monitor the status of their AtoN installations via real-time data from anywhere in the world.

This advanced GSM system (Global System for Mobile Communication) can be internally integrated into a range of Sealite lanterns with no external aerials or base station required. Users simply monitor the status of their installations using a cellular telephone and/or secure web portal access.

The GSM Cell-Phone System works via the international standard, fully digital GSM network - the same network used by millions of cell-phone users worldwide when making mobile cell-phone calls, and sending SMS and MMS messages. Sealite lanterns fitted with the GSM Cell-Phone System have an internally integrated Motorola® cell-phone module and Sealite proprietary software to enable data transfer between the lantern and designated user's cell-phone (via SMS message) or PC web interface.

Maintenance personnel simply send an SMS message to the designated Sealite GSM lantern cell-phone number, and then receive an automatic SMS reply detailing the various pre-set operational conditions. In addition, various alarm conditions can also be activated such as tracking a drifting buoy via GPS that has moved outside a designated area (if mooring is broken etc) or alerting to a potential power disruption.

Sealite's innovative GSM system may also be setup to regularly report lantern conditions to a secure user-login portal area of the Sealite website. This provides details of the GSM lanterns operational status, in an easy-to-read PC interface, such as historical graphed data, GPS positioning viewed via internet mapping systems, and day-to-day operational information about each individual lantern over the period of it's service life.

The Sealite GSM Monitoring System is secure - unauthorised access to the lantern's data cannot occur as only the designated cell-phone numbers programmed into the GSM lantern will respond to a remote SMS. In addition, data transferred to and maintained on the Sealite website is user-password protected.

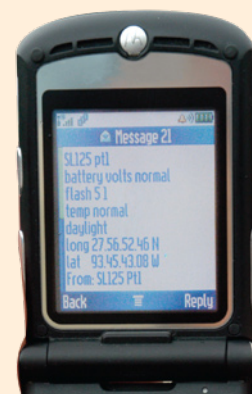
Each lantern is fitted with it's own SIM card, which provides a designated cell-phone contact number for each individual lantern. Any network operator can be used providing they have GSM coverage.

### Monitoring Conditions

- Battery voltage
- Solar module charging current
- Lantern current draw
- Lantern position - Latitude and Longitude (including 'off-station' facility)
- Day/night on status
- Current flash code setting
- Internal lantern PCB temperature: Normal/High

### Available Pre-set Alarms

- Low battery voltage
- High PCB temperature
- 'Off-station' or no GPS data (available when GPS fitted)



**Head Office:**  
Sealite Pty Ltd  
AUSTRALIA

Ph. +61 (0)3 5977 6128  
Fax. +61 (0)3 5977 6124  
Internet: [www.sealite.com.au](http://www.sealite.com.au)  
Email: [info@sealite.com.au](mailto:info@sealite.com.au)

**USA Customers:**  
Sealite USA  
USA (Gilford, NH)

Ph. (603) 524-6066  
Fax. (603) 524-8100  
Internet: [www.sealiteusa.com](http://www.sealiteusa.com)  
Email: [info@sealiteusa.com](mailto:info@sealiteusa.com)

# GSM Cell-Phone Monitoring & Alarm System

**Monitor GSM lantern installations via Sealite's secure website user-login portal**

Shows maximum battery voltage over the last 24 hour period

Shows total amount of solar charge added back into the battery system over the last 24 hour period (dependent on local weather conditions)

SIM card cell-phone number (international format eg. +61421777888)

Other table data shows operational condition of individual GSM lanterns

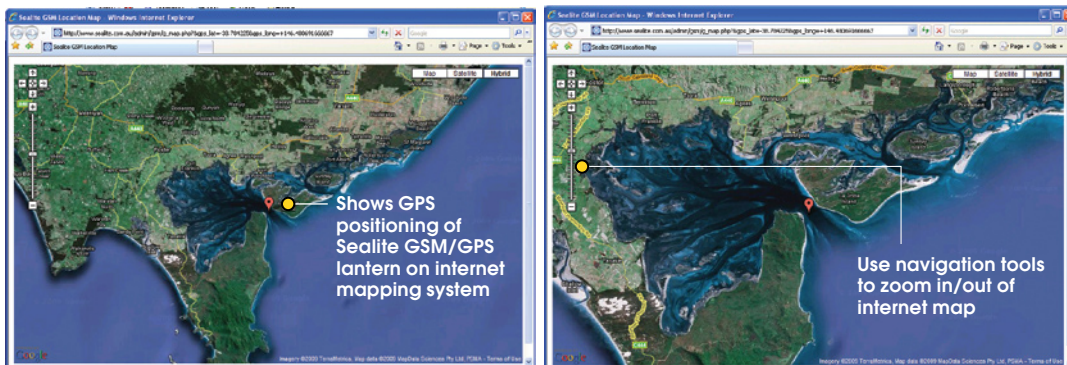


Shows minimum battery voltage over the last 24 hour period

Click on a specific date to view the operational data for that day in the table below

View graphed data as a yearly chart (365 day report) or monthly chart

Click "LOCATE ON MAP" to view a map of the position of the GSM/GPS lantern installation

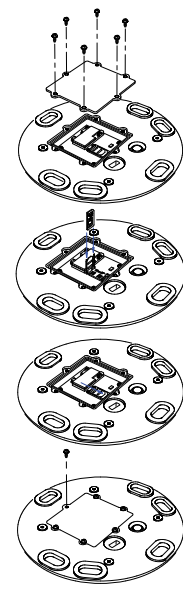
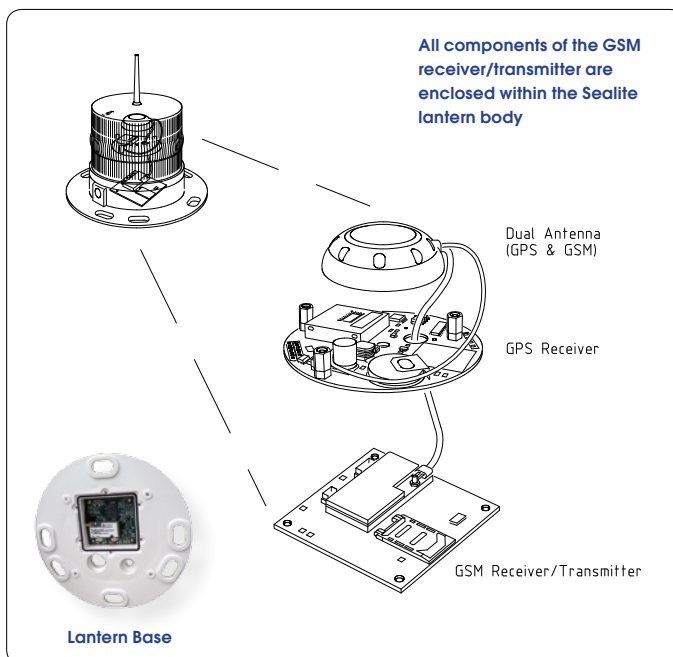


**GPS positioning of GSM/GPS lantern viewed via internet mapping system**

## 'Off-Station' Alarm Condition

Using the designated cell-phone the operator can set or change 'off-station' coordinates once the AtoN is deployed.

If the AtoN moves off-station, the operator can continue to track the location of the unit for safe recovery (providing the system remains in or returns to an area with GSM coverage).



**Individual SIM cards are easily installed within the base of the GSM lantern**



**Head Office:**  
Sealite Pty Ltd  
AUSTRALIA

Ph. +61 (0)3 5977 6128  
Fax. +61 (0)3 5977 6124  
Internet: [www.sealite.com.au](http://www.sealite.com.au)  
Email: [info@sealite.com.au](mailto:info@sealite.com.au)

**USA Customers:**  
Sealite USA  
USA (Gilford, NH)

Ph. (603) 524-6066  
Fax. (603) 524-8100  
Internet: [www.sealiteusa.com](http://www.sealiteusa.com)  
Email: [info@sealiteusa.com](mailto:info@sealiteusa.com)