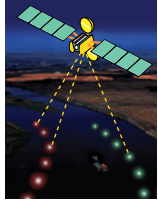


# SLC400

## Compact 4nm Solar Marine Lantern

*This equipment complies with requirements of the U.S. Coast Guard in 33 CFR part 66*



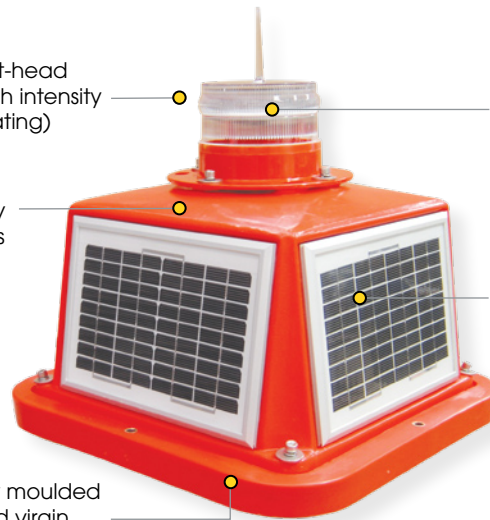
Available with internal GPS synchronisation or GSM Cell-phone Monitoring



SL125-1 light-head (36 ultra-high intensity LEDs. IP68 rating)

High visibility IALA colours

Rotationally moulded UV-stabilised virgin polyethylene body



LED lens and Sealite's 360° Omnidirectional LED Reflector (US Pat. No. 6,667,582. AU Pat. No. 778,918)

4 x 5watt multicrystalline solar modules, ensuring maximum light collection to charge the battery

Internal 26Ah battery

### The Sealite Advantage

- Complete unit - ready for immediate installation
- Impact & weather resistant polyethylene
- 256 IALA flash patterns, user-adjustable without the need for external devices
- Tempered glass solar modules for peak efficiency
- Automatic night activation
- Vertical light emissions to maintain visibility when passing adjacent to light

### The SLC400 is a completely self-contained 4nm Solar LED Marine Lantern designed for a range of low-maintenance applications.

The light boasts a large internal waterproof battery compartment, a 36 LED flasher unit, and 4 premium-grade 5watt solar modules mounted to collect sunlight at all angles.

The SLC400 is moulded from UV-stabilised virgin polyethylene, providing enormous impact and weather resistance, in addition to high visibility IALA colours.

The tough polycarbonate lens is specifically designed for use with LEDs, and incorporates an environment-friendly spike - deterring unwelcome bird life.

The user-friendly 2-piece design allows the lantern to be opened for convenient battery inspection or replacement whilst the base remains fixed to the supporting structure.

#### Optional GPS Synchronisation (SLC400-GPS)

The SLC400 is also available with optional GPS synchronisation enabling users to clearly mark channels, ports, rivers and entrances, marinas, aquaculture installations and exclusion zones with independent lanterns which flash in synchronisation.

When lanterns flash in synchronisation, they can be clearly distinguished from other nav aids and confusing background lighting.

#### Optional GSM Remote Monitoring (SLC400-GSM)

The SLC400 may also be fitted with GSM remote monitoring capabilities- enabling users to access real-time diagnostic data remotely via Cell-phone or PC integration.

SLC400 installed in Denmark



**Head Office:**  
Sealite Pty Ltd  
AUSTRALIA

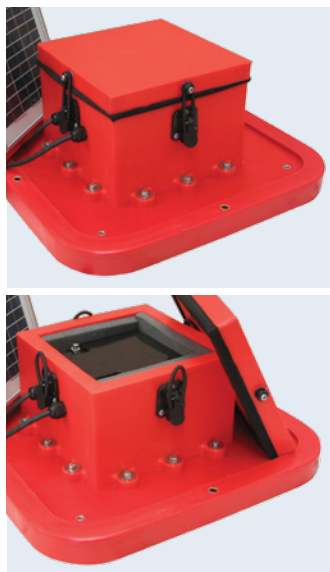
Ph. +61 (0)3 5977 6128  
Fax. +61 (0)3 5977 6124  
Internet: [www.sealite.com.au](http://www.sealite.com.au)  
Email: [info@sealite.com.au](mailto:info@sealite.com.au)

**USA Customers:**  
Sealite USA  
USA (Gilford, NH)

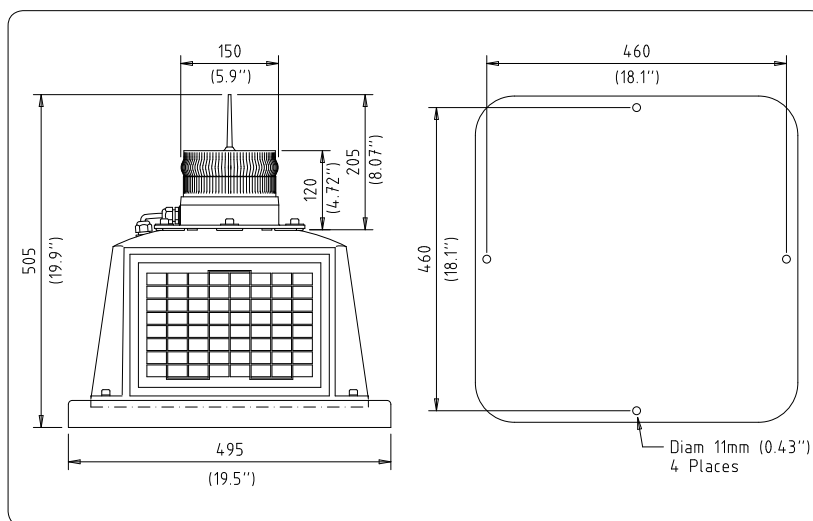
Ph. (603) 524-6066  
Fax. (603) 524-8100  
Internet: [www.sealiteusa.com](http://www.sealiteusa.com)  
Email: [info@sealiteusa.com](mailto:info@sealiteusa.com)

# SLC400

## Compact 4nm Solar Marine Lantern



Convenient battery replacement



### SPECIFICATIONS

#### Light Characteristics

Light Source	SL125-1 (36 LED lantern as standard)
Available Colours	Red, Green, White, Yellow, Blue
Peak Intensity (cd)	>60
Visible Range (nm)	>4
Horizontal Output (degrees)	360
Vertical Divergence (degrees)	9
Reflector Type	Omnidirectional 360° LED Reflector (US Pat. No. 6,667,582. AU Pat. No. 778,918)
Available Flash Characteristics	Up to 256 IALA recommended (user adjustable)
Intensity Adjustments	Adjustable in 25% increments
LED Life Expectancy (hours)	>100,000

#### Electrical Characteristics

Circuit Protection	Integrated
Nominal Voltage (v)	12
Autonomy (days)	>30 (14 hour darkness, 12.5% duty cycle)
Temperature Range	-40 to 80°C

#### Solar Characteristics

Solar Module Type	Multicrystalline
Output (watts)	20 (4 x 5watt)
Solar Module Efficiency (%)	14
Charging Regulation	Microprocessor controlled

#### Power Supply

Battery Type	SLA (Sealed Lead Acid)
Battery Capacity (Ah)	26
Nominal Voltage (v)	12
Battery Service Life	Average 5 years

#### Physical Characteristics

Body Material	Rotationally moulded UV-stabilised virgin polyethylene
Lens Material	LEXAN® Polycarbonate - UV-stabilised
Lens Diameter (mm/inches)	150 / 5 <sup>7</sup> / <sub>8</sub>
Lens Design	External optics with interior flute design
Mounting	4 x 11mm mounting holes
Height (mm/inches)	505 / 19 <sup>7</sup> / <sub>8</sub>
Width (mm/inches)	495 / 19 <sup>1</sup> / <sub>2</sub>
Mass (kg/lbs)	17 / 37 <sup>3</sup> / <sub>8</sub>
Product Life Expectancy	Up to 12 years

#### Certifications

CE	EN61000-6-3:1997. EN61000-6-1:1997
Quality Assurance	ISO9001:2000
Waterproof	IP68 light-head

#### Intellectual Property

Patents	US Pat. No. 6,667,582. AU Pat. No. 778,918
Trademarks	SEALITE® is a registered trademark of Sealite Pty Ltd

#### Warranty \*

Full 3 years

#### Options Available

- 200mm OD mounting plate
- Hard-wire or GPS synchronisation
- Remote monitoring (via GSM cell-phone- SLC400-GSM)
- *Note* - remote monitoring will reduce visible range of lantern due to increased power consumption

CE

• Specifications subject to change or variation without notice

\* Subject to standard terms and conditions



**Head Office:**  
Sealite Pty Ltd  
AUSTRALIA

Ph. +61 (0)3 5977 6128  
Fax. +61 (0)3 5977 6124  
Internet: [www.sealite.com.au](http://www.sealite.com.au)  
Email: [info@sealite.com.au](mailto:info@sealite.com.au)

**USA Customers:**  
Sealite USA  
USA (Gilford, NH)

Ph. (603) 524-6066  
Fax. (603) 524-8100  
Internet: [www.sealiteusa.com](http://www.sealiteusa.com)  
Email: [info@sealiteusa.com](mailto:info@sealiteusa.com)