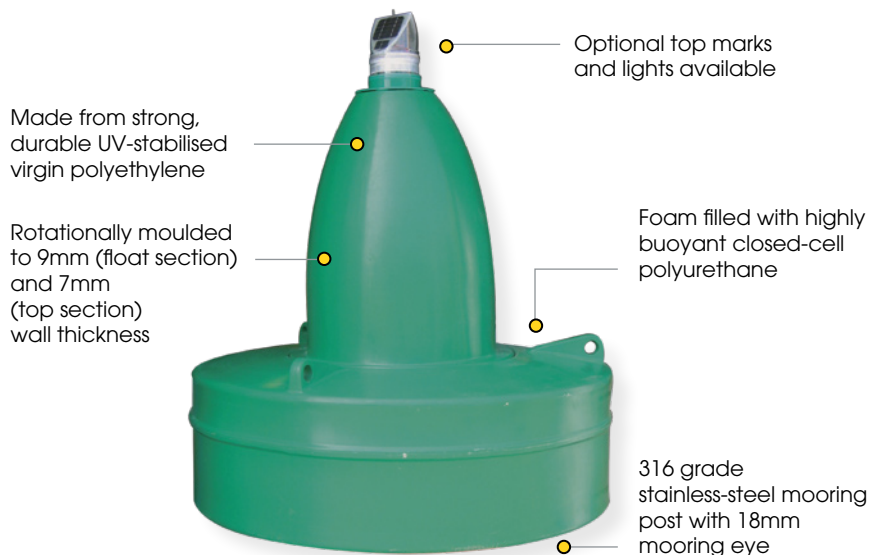


SLB1250

1250mm dia. Navigation Buoy



The Sealite Advantage

- Complete unit- ready for immediate installation
- High visibility red, green, white or yellow as per IALA recommendations
- High night & day visibility
- 316-grade stainless-steel eye bolt for strong mooring chain attachment point
- Excellent buoyancy & stability

The SLB1250, 1250mm dia. Navigation Buoy, has proven its superior performance in many parts of Australia and around the world for long-range river and sea navigation.

The base is moulded in one-piece strong, coloured, durable polyethylene - filled with highly buoyant polyurethane and UV-stabilised for resistance to sunlight.

The strong, lightweight polyethylene buoy top is moulded in standard IALA high visibility colours and shapes to suit a range of installation requirements.

A powder-coated extension pole may be supplied to increase the focal height of the Sealite lantern, as well as an additional base section for extra buoyancy.

For superior night visibility the SLB1250 may be fitted with a one, two, three or four nautical mile Sealite LED marine lantern.

Brass inserts provide a secure mounting for top, tower and signs. A 316-grade stainless-steel eyebolt passes through the base providing a strong mooring chain attachment point.

In addition, all hardware and fittings are 316-grade stainless-steel.

Manila Philippines installation



Head Office:
Sealite Pty Ltd
AUSTRALIA

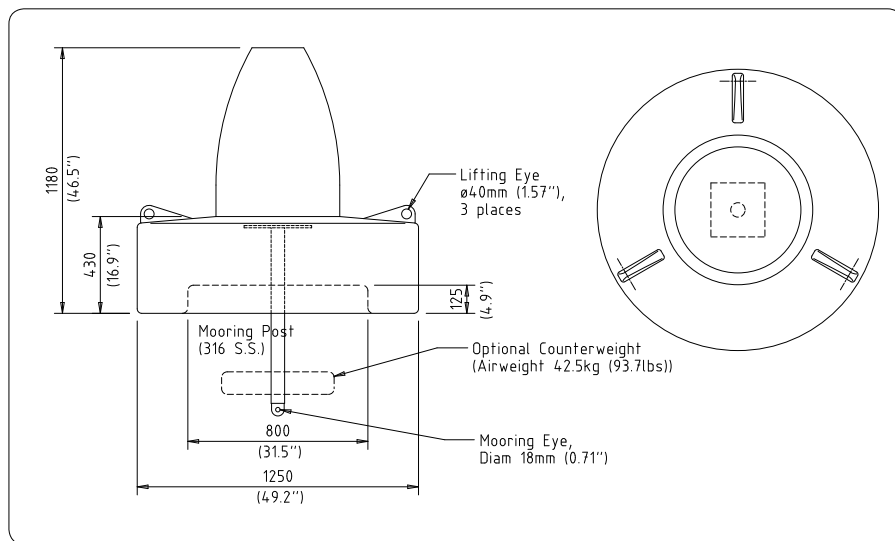
Ph. +61 (0)3 5977 6128
Fax. +61 (0)3 5977 6124
Internet: www.sealite.com.au
Email: info@sealite.com.au

USA Customers:
Sealite USA
USA (Gilford, NH)

Ph. (603) 524-6066
Fax. (603) 524-8100
Internet: www.sealiteusa.com
Email: info@sealiteusa.com

SLB1250

1250mm dia. Navigation Buoy



SPECIFICATIONS •

General Characteristics

Available Colours
Focal Plain Height (mm/inches)
Total Reserve Buoyancy (kg/lbs)
Draft, Typical (mm/inches)
Freeboard (mm/inches)
Maximum Mooring Load (kg/lbs)

Red, Green, White, Yellow as per IALA Recommendations
1210 / 47²/₈ (light mounted below top mark), 2050 / 80³/₄ (light mounted above top mark)
230 / 507
370 / 14¹/₂
295 / 11²/₈
230 / 507

Physical Characteristics

Material
Wall Thickness (mm/inches)
Ballast (kg/lbs)
Filling
Height (mm/inches)
Width (mm/inches)
Mass (kg/lbs)
Product Life Expectancy

Rotationally moulded UV-stabilised virgin polyethylene, 316-grade mooring pole
9³/₈
30 / 66 external counter-weight (optional)
Closed-cell polyurethane foam
1180 / 46¹/₂
1250 / 49¹/₄
70 / 154
Up to 12 years

Certifications

Quality Assurance

ISO9001:2000

Intellectual Property

Trademarks

SEALITE® is a registered trade mark of Sealite Pty Ltd

Warranty *

1 year

Lantern Options

Sealite SL15, SL60, SL70, SLC310 or SLC420 lantern

Accessory Options

- Mould-in graphics
- Sealite IALA recommended top marks
- External ballast
- Remote monitoring (GSM cell-phone)
- Double base configuration for even greater buoyancy (SLB1250-DB)
- Radar reflector

CE

• Specifications subject to change or variation without notice

* Subject to standard terms and conditions



Available in a range of IALA colours and configurations, optional mould-in graphics and with a wide range of IALA recommended Top Marks



Head Office:
Sealite Pty Ltd
AUSTRALIA

Ph. +61 (0)3 5977 6128
Fax. +61 (0)3 5977 6124
Internet: www.sealite.com.au
Email: info@sealite.com.au

USA Customers:
Sealite USA
USA (Gilford, NH)

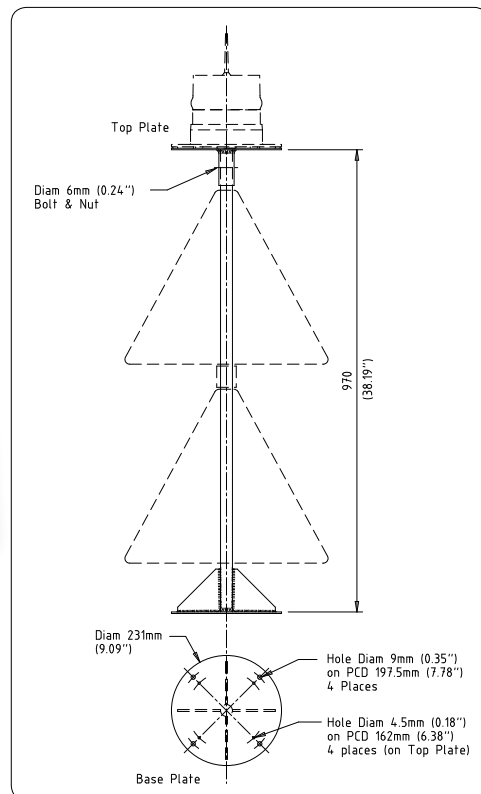
Ph. (603) 524-6066
Fax. (603) 524-8100
Internet: www.sealiteusa.com
Email: info@sealiteusa.com

IALA Top Marks

Optional
316-grade
stainless-steel
mounting plate
for lantern
installations

Rotationally-
moulded to
3mm wall
thickness

Industry
standard
200mm OD
base plate



Designed and manufactured in accordance with IALA recommendations, Sealite's range of Top Marks offer flexibility and reliability, and are a low cost and maintenance, high visibility solution to marine navigation.

The Top Marks are rotationally-moulded on-site from UV-stabilised virgin polyethylene with a wall thickness of 3mm, and are available in a range of IALA recommended colours and configurations to suit both IALA Regions A and B.

With a 26mm (1 inch) internal stainless-steel pole and industry standard 200mm OD mounting plate, Sealite's range of IALA Top Marks can be easily attached to any existing navigation aid.



| Order Code | Description | Dimensions (mm) Height x Width* | Weight (kg/lbs)* |
|------------|---|------------------------------------|------------------|
| TM-PH.A | Port Hand Mark- 1 red cylinder (IALA Region A) | 500 x 390 | 3.2 / 7 |
| TM-PH.B | Port Hand Mark- 1 green cylinder (IALA Region B) | 500 x 390 | 3.2 / 7 |
| TM-SH.A | Starboard Hand Mark- 1 green cone (IALA Region A) | 360 x 460 | 2.2 / 4¾ |
| TM-SH.B | Starboard Hand Mark- 1 red cone (IALA Region B) | 360 x 460 | 2.2 / 4¾ |
| TM-CARD-N | North Cardinal Mark- 2 black cones | 360 x 460 | 2.2 / 4¾ |
| TM-CARD-S | South Cardinal Mark- 2 black cones | 360 x 460 | 2.2 / 4¾ |
| TM-CARD-W | West Cardinal Mark- 2 black cones | 360 x 460 | 2.2 / 4¾ |
| TM-CARD-E | East Cardinal Mark- 2 black cones | 360 x 460 | 2.2 / 4¾ |
| TM-ISO | Isolated Danger Mark- 2 black spheres | 360 x 360 | 2.2 / 4¾ |
| TM-SW | Safe Water Mark- 1 red sphere | 360 x 360 | 2.2 / 4¾ |

* Specifications subject to change or variation without notice

All Top Marks are manufactured with UV-stabilised virgin polyethylene, with a wall thickness of 3mm. Diameter of internal pole is 26mm.



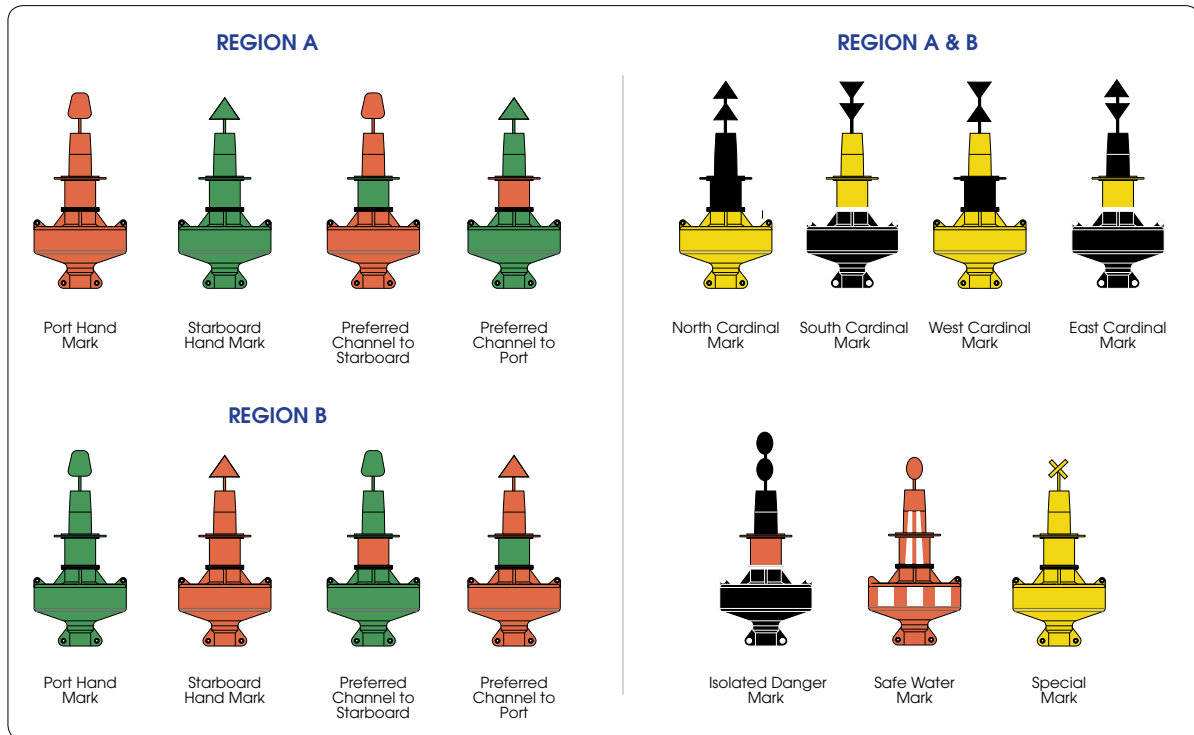
Head Office:
Sealite Pty Ltd
AUSTRALIA

Ph. +61 (0)3 5977 6128
Fax. +61 (0)3 5977 6124
Internet: www.sealite.com.au
Email: info@sealite.com.au

USA Customers:
Sealite USA
USA (Gilford, NH)

Ph. (603) 524-6066
Fax. (603) 524-8100
Internet: www.sealiteusa.com
Email: info@sealiteusa.com

Buoy Configurations for IALA Regions A and B



The Sealite buoy division provides turn-key production of navigation buoys from tooling development, raw material selection and production, to final testing and inspection.

Keeping this entire process in-house allows Sealite to guarantee the superior quality of its products and ensures fast turnaround times.

Each buoy product is rotationally-moulded from UV stabilised virgin polyethylene, with individual components of Sealite's larger buoy products moulded in various colours to suit a range of IALA recommended configurations.

Why Choose Polyethylene Buoys?

- No Painting
- Inhibits Growth
- Increased interval between servicing
- Routine maintenance on location
- Easily repaired in the unlikely event of damage
- Lightweight for ease of deployment and maintenance
- Environment friendly - no use of toxic antifouling paint



Head Office:
Sealite Pty Ltd
AUSTRALIA

Ph. +61 (0)3 5977 6128
Fax. +61 (0)3 5977 6124
Internet: www.sealite.com.au
Email: info@sealite.com.au

USA Customers:
Sealite USA
USA (Gilford, NH)

Ph. (603) 524-6066
Fax. (603) 524-8100
Internet: www.sealiteusa.com
Email: info@sealiteusa.com