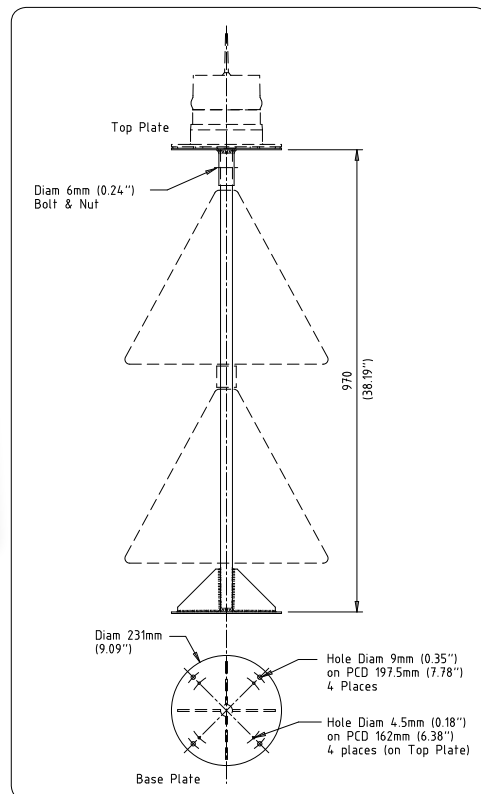


IALA Top Marks

Optional
316-grade
stainless-steel
mounting plate
for lantern
installations

Rotationally-
moulded to
3mm wall
thickness

Industry
standard
200mm OD
base plate



Designed and manufactured in accordance with IALA recommendations, Sealite's range of Top Marks offer flexibility and reliability, and are a low cost and maintenance, high visibility solution to marine navigation.

The Top Marks are rotationally-moulded on-site from UV-stabilised virgin polyethylene with a wall thickness of 3mm, and are available in a range of IALA recommended colours and configurations to suit both IALA Regions A and B.

With a 26mm (1 inch) internal stainless-steel pole and industry standard 200mm OD mounting plate, Sealite's range of IALA Top Marks can be easily attached to any existing navigation aid.



Order Code	Description	Dimensions (mm) Height x Width*	Weight (kg/lbs)*
TM-PH.A	Port Hand Mark- 1 red cylinder (IALA Region A)	500 x 390	3.2 / 7
TM-PH.B	Port Hand Mark- 1 green cylinder (IALA Region B)	500 x 390	3.2 / 7
TM-SH.A	Starboard Hand Mark- 1 green cone (IALA Region A)	360 x 460	2.2 / 4¾
TM-SH.B	Starboard Hand Mark- 1 red cone (IALA Region B)	360 x 460	2.2 / 4¾
TM-CARD-N	North Cardinal Mark- 2 black cones	360 x 460	2.2 / 4¾
TM-CARD-S	South Cardinal Mark- 2 black cones	360 x 460	2.2 / 4¾
TM-CARD-W	West Cardinal Mark- 2 black cones	360 x 460	2.2 / 4¾
TM-CARD-E	East Cardinal Mark- 2 black cones	360 x 460	2.2 / 4¾
TM-ISO	Isolated Danger Mark- 2 black spheres	360 x 360	2.2 / 4¾
TM-SW	Safe Water Mark- 1 red sphere	360 x 360	2.2 / 4¾

* Specifications subject to change or variation without notice

All Top Marks are manufactured with UV-stabilised virgin polyethylene, with a wall thickness of 3mm. Diameter of internal pole is 26mm.



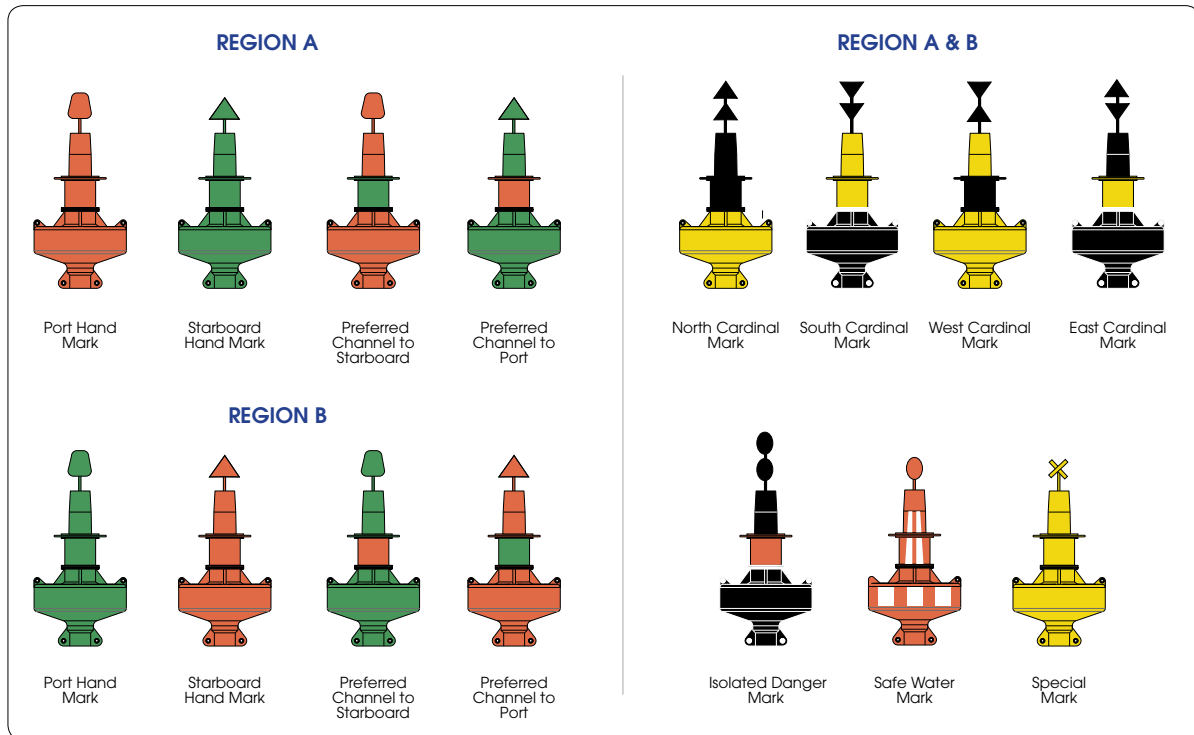
Head Office:
Sealite Pty Ltd
AUSTRALIA

Ph. +61 (0)3 5977 6128
Fax. +61 (0)3 5977 6124
Internet: www.sealite.com.au
Email: info@sealite.com.au

USA Customers:
Sealite USA
USA (Gilford, NH)

Ph. (603) 524-6066
Fax. (603) 524-8100
Internet: www.sealiteusa.com
Email: info@sealiteusa.com

Buoy Configurations for IALA Regions A and B



The Sealite buoy division provides turn-key production of navigation buoys from tooling development, raw material selection and production, to final testing and inspection.

Keeping this entire process in-house allows Sealite to guarantee the superior quality of its products and ensures fast turnaround times.

Each buoy product is rotationally-moulded from UV stabilised virgin polyethylene, with individual components of Sealite's larger buoy products moulded in various colours to suit a range of IALA recommended configurations.

Why Choose Polyethylene Buoys?

- No Painting
- Inhibits Growth
- Increased interval between servicing
- Routine maintenance on location
- Easily repaired in the unlikely event of damage
- Lightweight for ease of deployment and maintenance
- Environment friendly - no use of toxic antifouling paint



Head Office:
Sealite Pty Ltd
AUSTRALIA

Ph. +61 (0)3 5977 6128
Fax. +61 (0)3 5977 6124
Internet: www.sealite.com.au
Email: info@sealite.com.au

USA Customers:
Sealite USA
USA (Gilford, NH)

Ph. (603) 524-6066
Fax. (603) 524-8100
Internet: www.sealiteusa.com
Email: info@sealiteusa.com