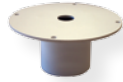


# Accessories

## The Sealite Advantage

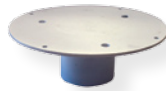
- Sealite manufactures a large range of marine-grade accessories to compliment navigation lantern and buoy products
- All listed hardware is aluminium, 7-stage powder-coated WHITE, unless otherwise stated.

Contact Sealite today for further information



### MC/01

Post mounting plate to suit SL07 & SL15  
50mm ID



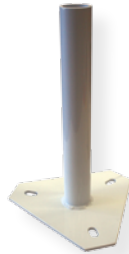
### MC/02

Post mounting plate to suit standard base SL60  
50mm ID



### MC/03

Post mounting plate to suit 200mm OD base pattern lanterns including SL60-LB, SL70, SLC310, SLC420 & SL125  
50mm ID



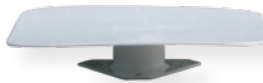
### MC/04

Post mounting stand to suit SL10, SL50 & SL23 series  
50mm OD post, 3-hole 200mm OD base pattern



### MC/05

90 degree wall mounting stand  
50mm OD



### MC/06

Adaptor plate to suit SLC400  
200mm OD mount



### MC/07

Adaptor plate to suit SLC500  
200mm OD mount



### MC/08

Adaptor plate to suit SLC600  
200mm OD mount



### MC/09

Buoy mounting plate to affix SL15 lantern to SLB600, SLB610 & SLB700 buoys



**Head Office:**  
Sealite Pty Ltd  
AUSTRALIA

Ph. +61 (0)3 59777 6128  
Fax. +61 (0)3 59777 6124  
Internet: [www.sealite.com.au](http://www.sealite.com.au)  
Email: [info@sealite.com.au](mailto:info@sealite.com.au)

**USA Customers:**  
Sealite USA  
USA (Gifford, NH)

Ph. (603) 524-6066  
Fax. (603) 524-8100  
Internet: [www.sealiteusa.com](http://www.sealiteusa.com)  
Email: [info@sealiteusa.com](mailto:info@sealiteusa.com)

# Accessories



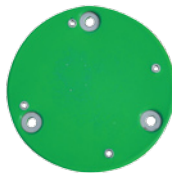
## MC/10

Buoy mounting plate to affix standard base SL60 lantern to SLB600, SLB610 & SLB700 buoys



## MC/11

Buoy mounting plate to affix SL70 lantern to SLB600, SLB610 & SLB700 buoys



## MC/12

Polyethylene multi-mount to suit SLC310 & SLC420  
Converts 4-hole to 3-hole base mounts



## MC/13

Lantern spacer Converts 3/4 hole mounting patterns  
200mm OD



## MC/14

316-grade SS bolt set to suit SL15 hardware  
M5 x 20mm



## MC/15

316-grade SS bolt set to suit standard base SL60 hardware  
M4 x 20mm



## MC/16

316-grade SS bolt set to suit SL70 & SL125 hardware  
M8 x 25mm



## MC/17

316-grade SS bolt set to suit SLC310 & SLC420 hardware  
M8 x 30mm



## MC/18

316-grade SS bolt set to suit SLC400, SLC500 & SLC600 hardware  
M8 x 20mm



**Head Office:**  
Sealite Pty Ltd  
AUSTRALIA

Ph. +61 (0)3 5977 6128  
Fax. +61 (0)3 5977 6124  
Internet: [www.sealite.com.au](http://www.sealite.com.au)  
Email: [info@sealite.com.au](mailto:info@sealite.com.au)

**USA Customers:**  
Sealite USA  
USA (Gilford, NH)

Ph. (603) 524-6066  
Fax. (603) 524-8100  
Internet: [www.sealiteusa.com](http://www.sealiteusa.com)  
Email: [info@sealiteusa.com](mailto:info@sealiteusa.com)